



多言語対応で読み上げてくれるよ。スキャンしてね。
It supports display and voice reading in multiple languages.

製品特徴
Product features
QR Translator.



4 部：2023年1月改訂

This is the English version of the package insert of this product, translated from the Japanese package insert. The English version is provided for consumers who have purchased and use this product in Japan to help their understanding of its details. Please carefully read and fully understand the information given on this package insert before taking this product.

General cold medicine “Non-pyrine”

Product Name: Pylon PL Tablet Gold

Pylon PL Tablet Gold

Class 2 Type Drug



Pylon PL Gold Tablets is a non-pyrine type comprehensive cold medicine that is highly effective against 11 cold symptoms such as cough, phlegm, sore throat, fever, and running nose with its 6 active ingredients: salicylamide and acetaminophen, which are antipyretic and analgesic ingredients; promethazine methylenedisalicylate, which is an antihistamine ingredient; caffeine anhydrous, which helps suppress pain; dextromethorphan hydrobromide hydrate, which suppresses coughing by suppressing the coughing center; and bromhexine hydrochloride, which makes it easier to cough up phlegm.



PRECAUTIONS



When not to use the product

(If do not follow these instructions, current symptoms may worsen or adverse reactions/incidents are more likely to occur.)

- This product should not be taken in the following persons.**
 - Patients who have had an allergic symptom to this drug or its ingredients
 - Patients who have experienced asthma from taking this drug or other cold remedies, or antipyretic analgesics
 - Children under 15 years old
- This drug should not be taken together with the following drugs:**
Other cold medicines, antipyretics/analgesics, sedatives, expectorants, internal medicine, etc. containing antihistamines (internal medicine for rhinitis, medicine for motion sickness, medicine for allergies, etc.)
- After taking this drug, do not drive a car nor operate machinery.**
(Sleepiness may occur.)
- Do not drink alcohol before/after taking this drug.**
- Do not take this drug for a long time.**



Consultation

- The following persons should contact a physician, pharmacist, or registered salesperson for a consultation before administration.**
 - Patients undergoing medical treatment from a physician or dentist
 - Pregnant women or women suspected of being pregnant
 - Patients who have experienced allergic symptoms associated with drugs, etc.
 - Persons with the following symptom: hyperthermia, urination difficulty
 - Persons diagnosed as having the following: heart disease, liver disease, kidney disease, bronchial asthma
- If the following symptoms are observed after taking this drug, these may be adverse reactions, so immediately discontinue the use of this drug, and show this document to your physician, pharmacist, or registered salesperson for a consultation.**

Affected area	Symptom	Affected area	Symptom
Skin	Rash/redness, itching	Respiratory system	Shortness of breath, breathing difficulties
Gastrointestinal system	Nausea and vomiting, loss of appetite	Urinary system	Urination difficulty
Neuropsychiatric system	Dizziness	Other	Excessive temperature decrease

The following serious symptoms may occur in rare cases. In such cases, immediately seek medical aid:

Name of symptom	Symptom
Shock (Anaphylaxis)	Symptoms, such as itching of skin, urticaria, hoarseness, sneezing, itchy throat, breathing difficulties, palpitations, and clouding of consciousness may occur immediately after take.
Oculomucocutaneous syndrome (Stevens-Johnson syndrome), toxic epidermal necrolysis, acute generalised exanthematous pustulosis	Hyperthermia, ocular hyperaemia, eye discharge, lip erosion, pain throat, widespread skin rash/redness, small pimples (small pustules) on reddened skin, general malaise, anorexia, etc. may persist or suddenly worsen
Drug-induced hypersensitivity syndrome	Widespread skin redness, systemic rash, fever, general malaise, swollen lymph nodes (in the neck, armpit, groin, etc. or such) may occur.
Hepatic function failure	Symptoms, such as fever, itching, rash, jaundice (yellowing of skin and white of eyes), brown urine, general malaise, loss of appetite, etc. may occur.
Kidney disorders	Symptoms, such as fever, rash, reduced urinary volume, general oedema, general malaise, arthralgia (painful joints), diarrhea, etc. may occur.
Interstitial pneumonia	Shortness and/or difficulties of breath when go upstairs or overwork, sudden dry cough and/or fever and its continuance
Asthma	Symptoms, such as wheezing or hissing when breathing, and difficult breathing, etc. may occur.

- The following symptoms may be observed after taking this drug. If these symptoms persist or worsen, discontinue the use of this drug, and show this document to your physician, pharmacist, or registered salesperson for a consultation:**
Dry mouth, drowsiness
- When symptoms do not improve even after taking this drug medicine 5 to 6 times, stop taking this drug and consult a physician, pharmacist or registered salesperson, being sure to take this document instruction leaflet with you.**



Indications

Relief of various symptoms of a common cold: cough, phlegm, sore throat, fever, running nose, stuffy nose, sneezing, chills (feeling cold due to fever), headache, joint pain, and muscle pain.



Dosage and Administration

Take the following amount with water or lukewarm water within 30 minutes after each meal.

Age	Single dose	Daily dosing frequency
Adult (15 years old and over)	2 tablets	3 times a day
Children under 15 years old	Not allowed to take this medicine	

- Strictly follow the prescribed dosage and administration.
- How to take out tablets

As shown in the right figure, press the raised part of the PTP sheet containing the tablet firmly with your fingertips to break the aluminum foil on the back, take out the tablet and swallow it. (If the PTP sheet is swallowed by mistake, it may lead to unexpected accidents, such as piercing the esophageal mucosa.)



Ingredient and amounts

Pylon PL Tablet Gold is a white tablet, containing the following amounts of ingredients per 6 tablets (the daily dose for adults):

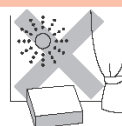
Ingredients	Amount (6 tablets)	Function
Salicylamide	648 mg	To relieve pain and to reduce fever
Acetaminophen	360 mg	
Anhydrous Caffeine	144 mg	To help relieve pain
Promethazine Methylene Disalicylate	32.4 mg	To relieve running nose, stuffy nose, and sneezing
Dextromethorphan Hydrobromide Hydrate	48 mg	To relieve coughing
Bromhexine Hydrochloride	12 mg	Clears phlegm

Additives include lactose hydrate, corn starch, croscarmellose sodium, hydroxypropylcellulose, light anhydrous silicic acid, and magnesium stearate.



Precautions for storage and handling

- Store in a cool, low humidity place away from direct sunlight.
- Keep out of reach of children.
- Do not transfer the medicine to a different container. (It may lead to misuse or alter the quality of the drug.)
- Do not take the product after its expiration date.



When you catch a cold, it is important to get a good rest and take nutrition. When having a hard time with a cold, it is also effective to use cold medicine.

Before catching a cold

1

When getting home from outside, make it a habit to wash hands and gargle.



80~90% of colds are caused by viruses. Using soap and hot water for hand washing and mouthwash for gargling can help.

2

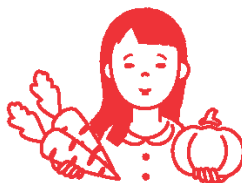
Maintain your condition on a daily habit.



If your body is not in good condition, you will be more susceptible to viruses. Don't get stressed or tired, get a good night sleep, and boost your physical strength and immunity.

3

Pay attention to daily meals.



Try to actively eat green and yellow vegetables and fruits that contain a lot of vitamin C and vitamin A, which are related to various immunity.

4

Replace the air in the room with frequent ventilation.



Try to bring in fresh air to keep the air in the room clean. In winter, the air is dry, so keep the humidity with a humidifier.

When catching a cold

1

First of all, take a rest.



Get a sufficient night sleep in a warm, humid room. If get sweat, wipe it off thoroughly and avoid getting your body cold.

2

When the fever goes down, warm up slowly in the bath.



The steam from the bath moisturizes the mucous membranes of the nose and throat. Please take a slow dip in lukewarm water that is less exhausting. However, long baths are prohibited.

3

Even if you don't have an appetite, get proper nutrition.



Eat something digestible and nutritious. Soup is recommended because it warms the body and keeps hydrated.

4

Let's keep in mind cough etiquette.



Droplets from coughing and sneezing may contain viruses. Wear a mask to prevent the spread of droplets.



Contact Desk

For inquiries about this product, please contact the store where you purchased it or contact the following:

●Shionogi Healthcare Co., Ltd. "Medical Information Center"

TEL: Osaka 06-6209-6948, Tokyo 03-3406-8450

Business hours: 9 a.m. to 5 p.m. (Excluding Saturdays, Sundays and Public Holidays)

About the "Adverse Reaction Victim Relief System"

● Pharmaceuticals and Medical Devices Agency

https://www.pmda.go.jp/kenkouhigai_camp/index.html

TEL: JAPAN 0120-149-931

Manufactured and Distributed by:
Shionogi Healthcare Co., Ltd.
2-6-18, Kitahama, Chuo-ku, Osaka, Japan

製品特徴
Product features
QR Translator.

